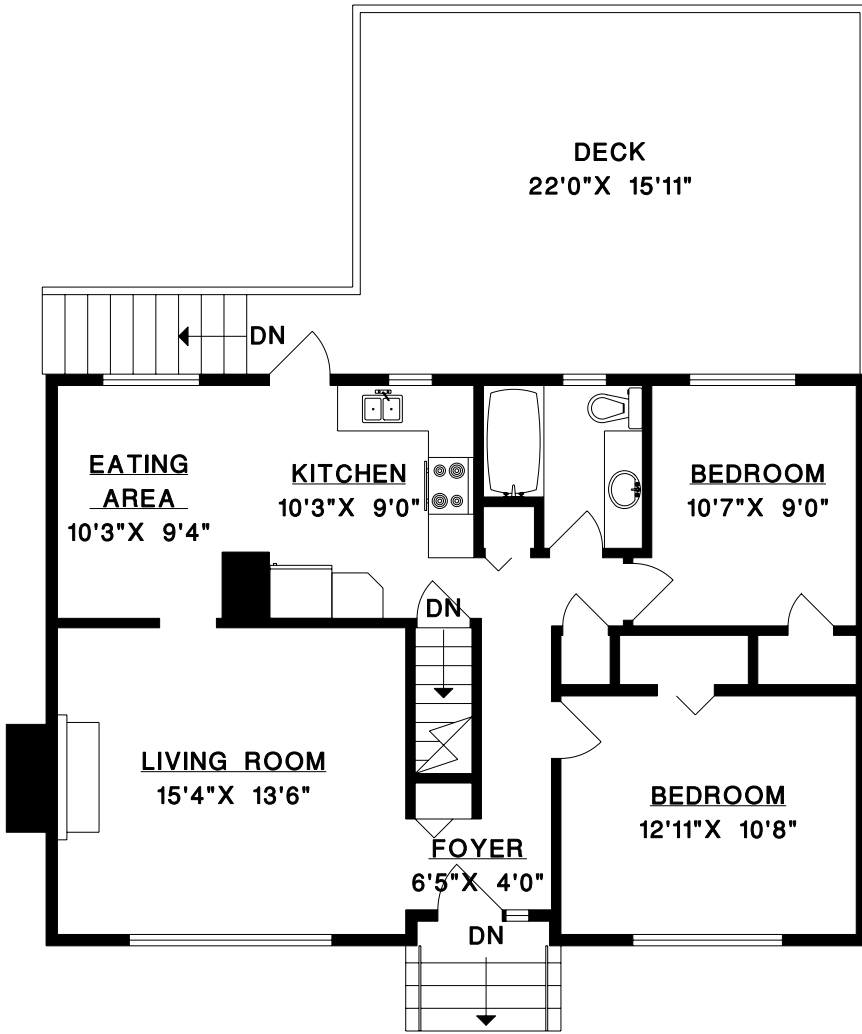


UPPER FLOOR



Prudential

JOHN & HANS GUST

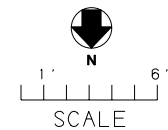
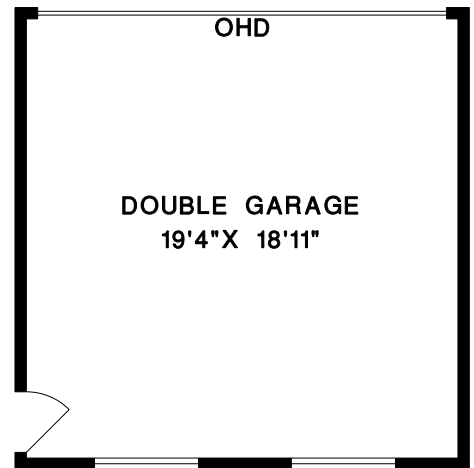
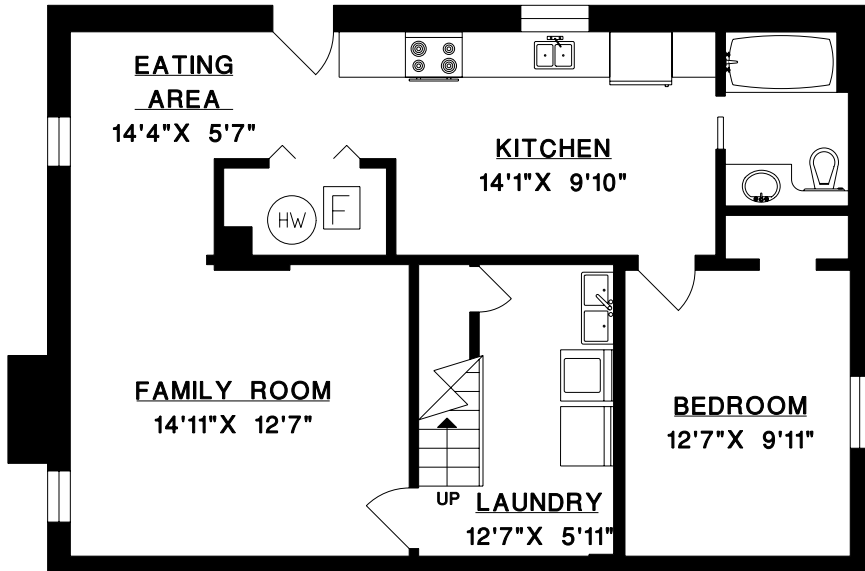
604-263-8800

4578 NAPIER ST.
BURNABY, B.C.

UPPER FLOOR	904	SQ. FT.
LOWER FLOOR	910	SQ. FT.
TOTAL	1814	SQ. FT.

GARAGE	407	SQ. FT.
DECK	368	SQ. FT.
PORCH	11	SQ. FT.

LOWER FLOOR



MEASURE MASTERS
VANCOUVER/FRASER
(604) 931-8585
MAR. 2007